



Shanghai Sonner intelligent equipment Co., LTD.
Building 22, Floors 1-3
Songjiang Caohejing Hi-Tech Park
518 Xinzhuang Road
Shanghai, 201612, China
Tel: +86 21 6446 6701
Fax: +86 21 5766 9735
Email: sales@sonnerfeeder.com



WeChat Official Account

EASY CONTROL
MORE ACCURACY

www.sonnerfeeder.com

EASY CONTROL
MORE ACCURACY
www.sonnerfeeder.com

*Indigenous hybrid solution
provider for the Chemical Fiber Industry*



About Sonner

SONNER is an advanced and dynamic company that design and manufactures high quality dosing and blending equipments.

Gathering a skilled team of experts specialized in engineering, development, manufacturing and management, Sonner provides customized technology and services to its customers in the sectors of polymer compounding and manmade fiber manufacturing, as well as in the plastics, food and chemical industries.

Based in China shanghai, Sonner set up a brunch office in India Mumbai. Through a dedicated network of agents and sales staff - serves clients throughout the world:

Asia: China, India, Japan, Korea, Singapore, Thailand and Indonesia

America: USA, Brazil, Mexico & Costa Rica

Europe: Germany, UK, Russia, Turkey & Romania

Middle East: Egypt & South Africa

Technology and Service

SONNER is an innovative and client-oriented company. Providing our customers with state-of -the-art technology and outstanding service is our priority.

Our R&D department designs and conceives our own devices and systems through:

Process inception

Creation and manufacturing of patented components and features

Machinery and sets assembling

Test and improvement of all equipment in our facilities

Hence our technology is always able to progress and adapt to our clients' use of products.

We care about our customers over all, in:

The development of tailor-made technological solutions meeting their specific needs and requirement.

Attendance and installation of machinery and software,

Providing a dedicated and skilled after sales service (maintenance, guidance, spare-parts, etc.)

Implementation of strict quality control and management to our products and services.

Certification

Quality and safety of equipment and processes are fundamental principles for Sonner. All our products are regularly tested and improved to conform with international quality requirements and standards.Sonner conforms to CE(European conformity) for the quality of its products and services.



Quality and safety of equipment and processes

Our products are applicable to **polymer compounding** processes,

Such as:

- Polyolefin compounds,
- Engineering plastic compounds,
- Masterbatch compounds,
- Thermoplastic elastomers,
- WPC(Wood Plastic Composite)compounds,
- Biodegradable products,

Our equipment can also operate in **plastics industries**,Such as:

- Injection processes:for instance in the construction,automotive and packaging sectors,
- Extrusion processes:for instance in the manufacturing of films, sheets,profiles,pipes and containers,

Our devices and systems can be applied to **chemical fiber** industries as well , Such as:

- FDY(Fully Drawn Yarn)
- POY(Partially Oriented Yarn)
- BCF(Bulk Continuous Filament)
- PSF(Polyester Staple Fiber)
- Non-woven fabrics

Our machines may furthermore be used for other various chemical processes, such as the fabrication of plasters.



Products

Compact-M Dosing and blending systems



Compact-M is a range of two or more components for Dosing and Blending continuously (CS45 & CS72) Applying Gravmetric Loss-in-Weight Principle.

Applications

- Processes:chemical fiber manufacturing (POY,FDY,BCF,PSF,Non-Woven,etc.) and plastics extrusion
- Handled material:free-flowing (pellets,granules and flakes)

Features

- Modular design,safe,simple,and reliable use
- Components:CFE feeder module,CSP weighting module,CVH dosing hopper module,CMI blending module,and EC-LWL control module
- Operation and display through Sonner M240 industry computer
- Capacity: 0.5 to 2200kg/h
- Accuracy: ± 0.1 to 0.25%

Compact-S Loss-in-weight feeder

Compact-S is a feeder processing material continuously,applying gravmetric loss-in-weight operating principle.

Applications

- Processes:chemical fiber manufacturing (POY,FDY,BCF,PSF,Non-Woven,etc.) and plastics extrusion
- Handled material:free-flowing (pellets,granules and flakes)

Features

- Modular design,safe,simple,and reliable use
- Components:CFE feeder module,CSP weighting module,CVH dosing hopper module,CMI blending module,and EC-LWL control module
- Operation and display through Sonner M240 industry computer
- Capacity: 0.5 to 2200kg/h
- Accuracy: ± 0.1 to 0.25%



M240 Industrial computer



M240 is an HMI(Human Machine Interface) device in Closed Loop to monitor material handing during compounding and chemical fiber manufacturing process.

Features

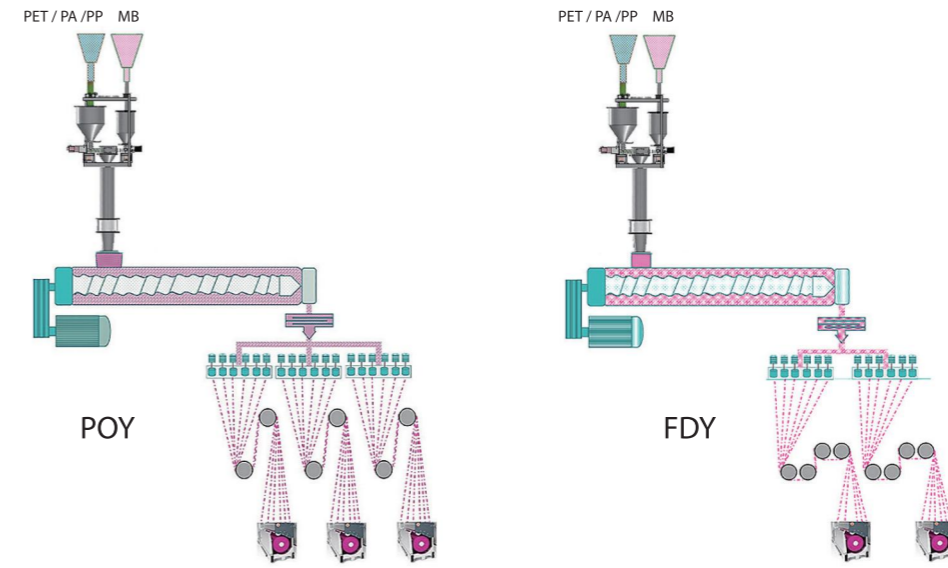
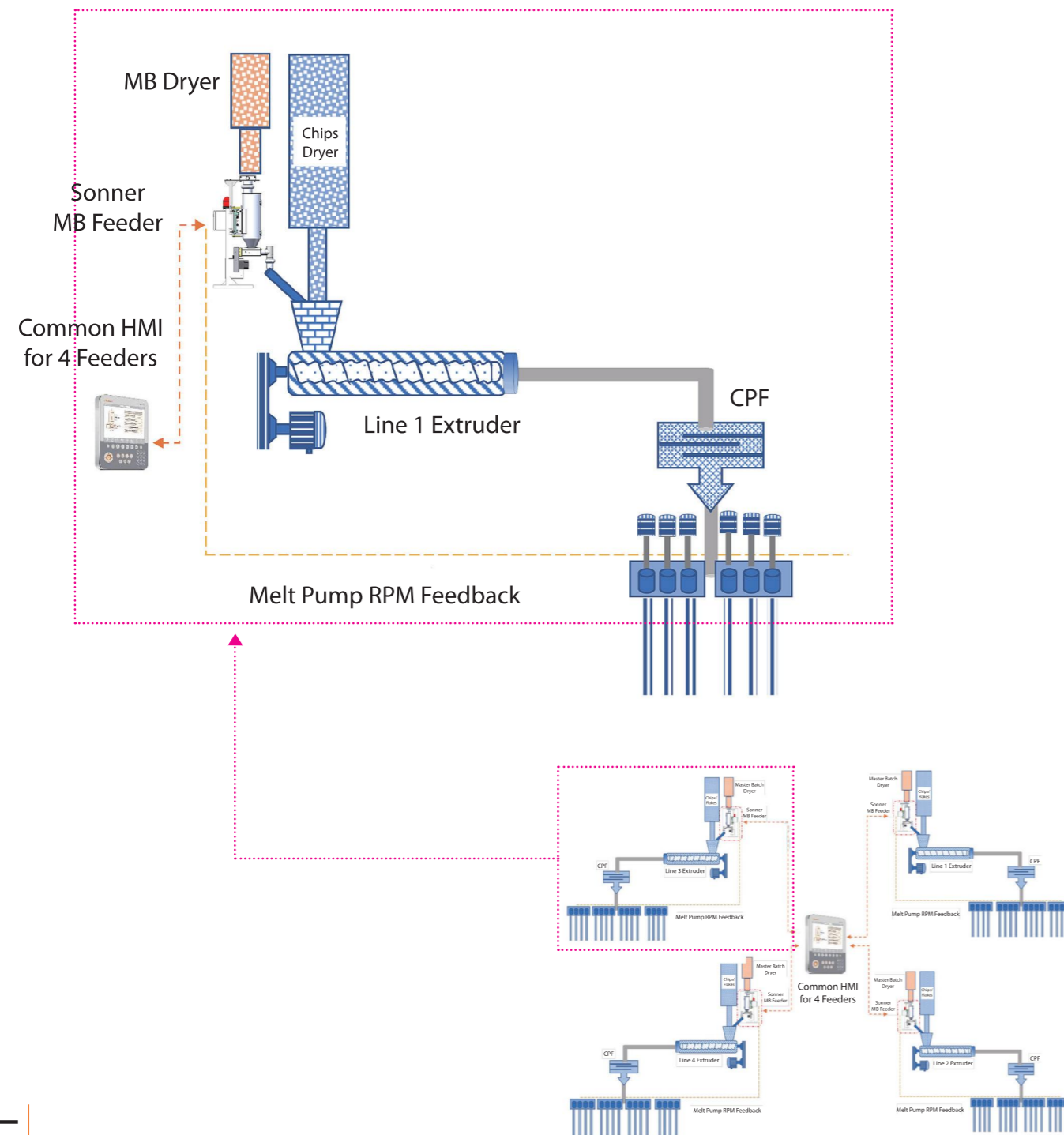
- Simultaneous monitoring of up to 6 feeders
- Synchronous data transmission between feeders,production line control system and factory data management system
- Ergonomic use
- Multiple languages
- Easy access to system,equipment and process data
- Alarm function
- Calibration according to weight or material type,automatic or manual
- History function recording past production data,and displaying trends and output



Application

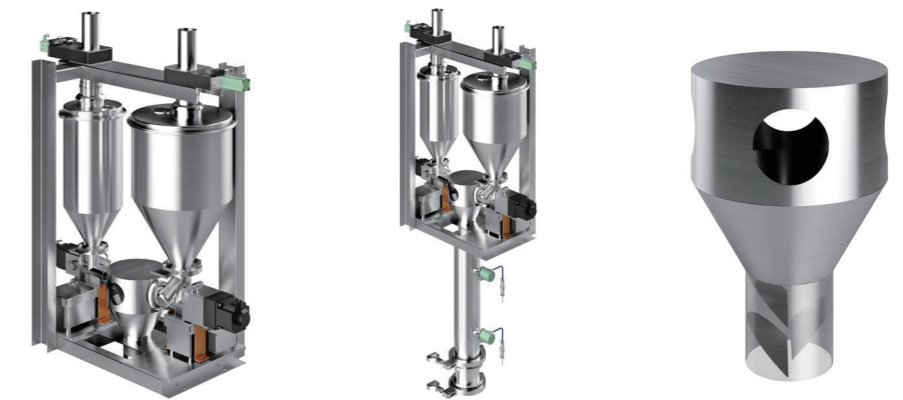
Compact-S

The SONNER Compact-S feeders automatically detect the material flow from the extruder melt pump, via either actual rpm or ON / OFF status.



Compact-M

COMPACT-M The main material and masterbatch are simultaneously fed through the SONNER COMPACT-M weight loss feeder and are fed into the extruder through a static mixer and a transition chamber equipped with high and low level sensors. The feeder's output is adjusted according to the high and low level, allowing the addition of masterbatch to be accurately measured.



Specification Info

CS45&CS72 Standard Construction

- Refill Valve: D70mm - CS72
Aluminum alloy body, anti-oxidation surface
- Dos Hopper: 20L - CS45
50L - CS72
3SUS304 Stainless steel
- Screw: SUS316 Stainless steel
D9/D12/20/32mm - CS45
D45/60MM - CS72
- Motor: 0.12kw, 220V/1Phase -CS45
0.2kw, 220V/1Phase - CS72
- Scale: 75kg - CS45
100kg - CS72
- Blender: SUS304 Stainless steel
Static Mixing design
- Chamber: SUS304 Stainless steel
Rotary Prober Control



Design Data





- Design Data:
- Material contact parts: Stainless steel
- Seal Parts: PTFE Silicon Or PTFE
- Material temperature: $\leq 170^{\circ}\text{C}$
- Ambient temperature: $0^{\circ}\text{C}-50^{\circ}\text{C}$
- Ambient humidity: $\leq 80\%$
- Protect level: IP54
- Power supply: $220\text{V}\pm 10\%$, AC, 3P,50Hz
- Load power: 1.5KW(Max.)
- Net weight: 120kg
- Color Of Stand: RAL7035

Screw Parts And Feeding Rates

Actual feeder screws are determined based on the material being fed.

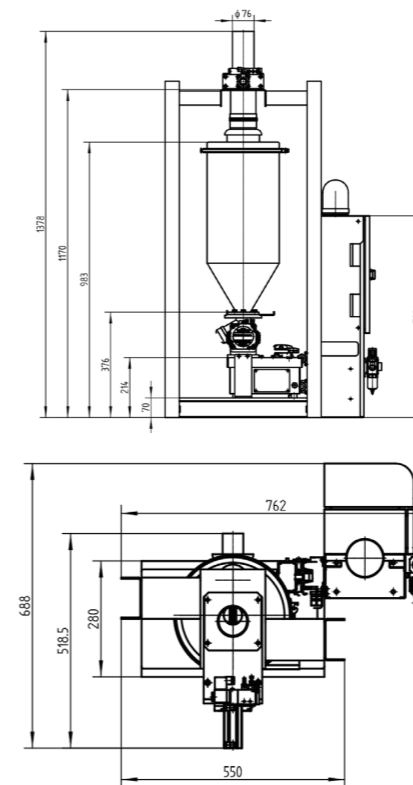
Attention

The following rates are theoretical values for free flowing materials being fed volumetrically. Actual feed rates depend on individual material characteristics. The feed range for loss-in-weight feeders is somewhat smaller. For feed rates at the upper or lower limits of the theoretical range, check with a Sonner Test Lab.

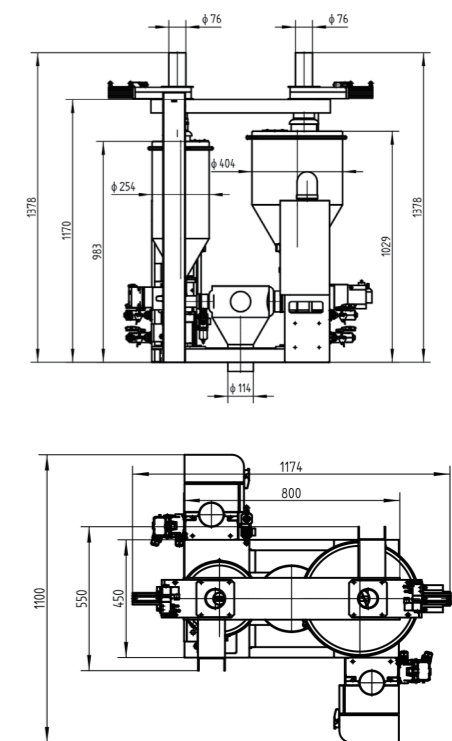
	B Type	Blade Type	Blade Type	Speed Range
				
Dia. Of Screw	9mm/12mm	20mm	32mm	
CS45 Capacity	1-20dm ³ /h	20-100dm ³ /h	600dm ³ /h	10-300Rev/min
Dia. Of Screw	--	46mm	60mm	
CS72Capacity		1000dm ³ /h	2000dm ³ /h	10-300Rev/min

Mechanical dimensional drawing

Compact-S



Compact-M



Contact us

CHINA

Shanghai Sonner intelligent equipment Co., LTD.

Area A, Floor 3, Building 22, No 518 Xinzhuan Road, Songjiang District, Shanghai 201612, China

Tel: + 86 21 6446 6701

Fax: + 86 21 5766 9735

sales@sonnerfeeder.com

INDIA

Sonner Feeding Systems India Pvt Ltd

A-216, Synthofine Industrial Estate.

Off Aarey Road, Goregaon East.

Mumbai 400 063, INDIA

Mob - +91 9930301012

email: ptatkare@sonnerfeeder.com / sales@sonnerfeeder.com

USA

Sonner Technology

Suite 601 E Akron Business Accelerator and Incubator 526 South Main Street

Tel: + 1 330 252 9204/5

Fax: + 1 330 252 9206

sales@sonnerfeeder.com

HONG KONG

Pluto Engineering Ltd.

Room 602 Eastern Commercial Center 397 Hennessy Road Wanchai, Hong Kong

Tel: + 852 2573 6778

Fax: + 852 2574 6390

sales@sonnerfeeder.com

INDIA

Pratex & Co (textile)

20 Kris Korner Commercial Plaza Near Muchhala College Opp Saraswati Idalay School

Anand Nagar GB Road Thane(W) 400615, India

Contact: Prashant Deshpande

Tel: + 91 9820 3097 36

pdeshpande@pratex.co.in